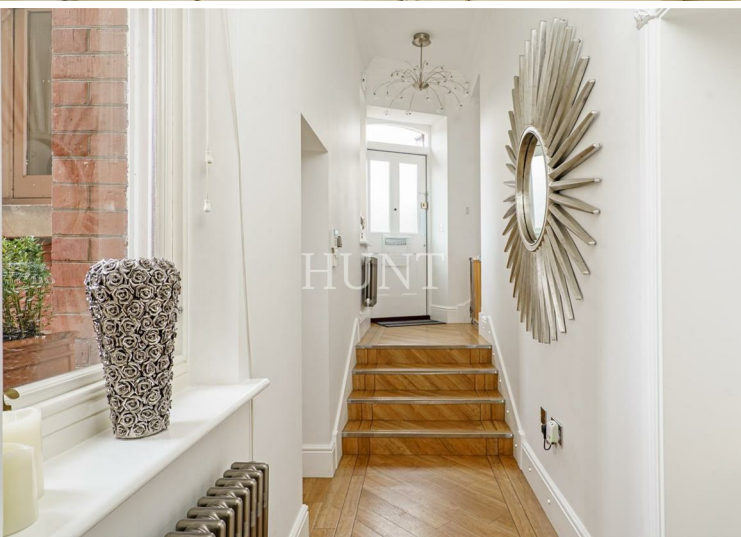


OSBORNE HOUSE | REPTON PARK | WOODFORD GREEN | IG8



**HUNT**  
Property Services Ltd





## DESCRIPTION

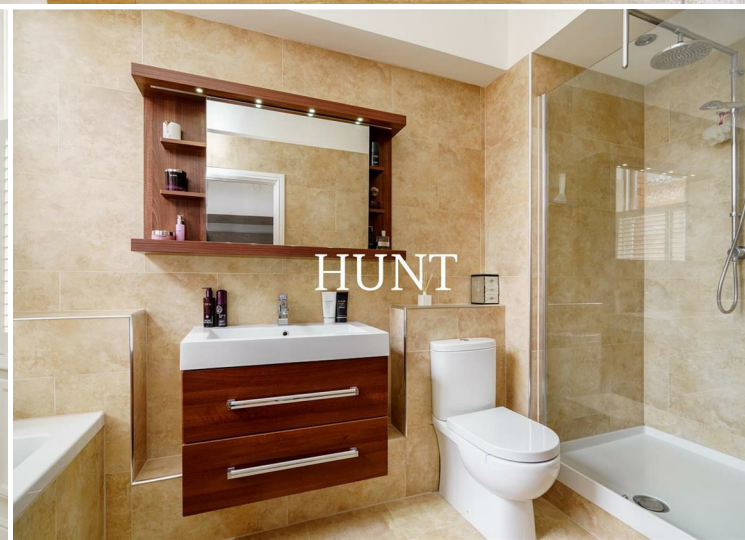
Stunning two story house with three bedrooms and a private garden. Set in an enviable position backing onto the green in Hampstead Avenue. This charming home is immaculately presented throughout. Boasting a fully integrated kitchen and separate utility room, bright spacious lounge with french doors to unique private south facing garden with stunning views of the open fields and woodland. First floor comprises three double bedrooms and two bathrooms. Two private parking spaces underground.



## SUMMARY

- THREE BEDROOM HOUSE
- TWO BATHROOMS
- DOWNSTAIRS WC
- STYLISH INTERIOR THROUGHOUT
- PRIVATE GARDEN LEADING TO MAGNIFICENT GROUNDS
- 24 HOUR CONCIERGE, NIGHT SECURITY
- SERVICE CHARGE £2710 PA GROUND RENT £125 PA
- LEASE 982 REMAINING
- SOLE AGENT

Price £820,000



HEWES  
SECURITY  
01246 3021

OSBORNE HOUSE | REPTON PARK | WOODFORD GREEN | IG8

HUNT

Hunt Property Services Ltd  
732 Chigwell Road  
Woodford Green  
Essex IG8 8AL  
020 85027667/07719987904  
info@huntpropertyservices.co.uk

HUNT  
Property Services Ltd

